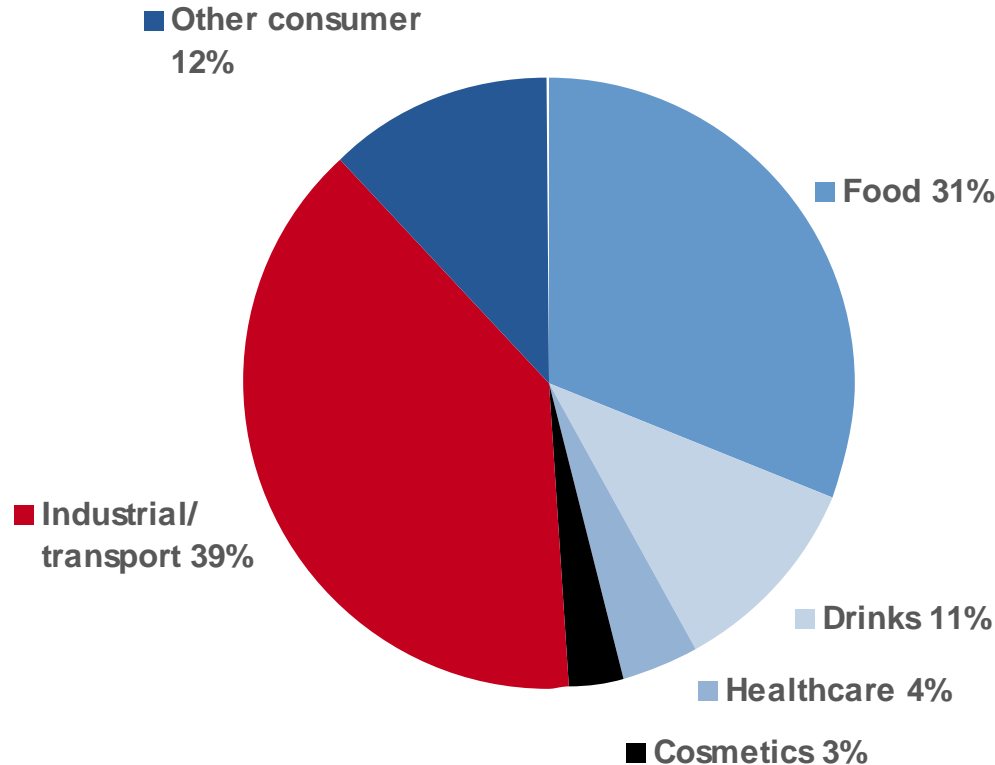


Flexographic Prepress Platemakers Association

Packaging consumption

Global packaging sales by end users



FMCG* Market remains the main Key Driver for CB

*Fast Moving Consumer Goods

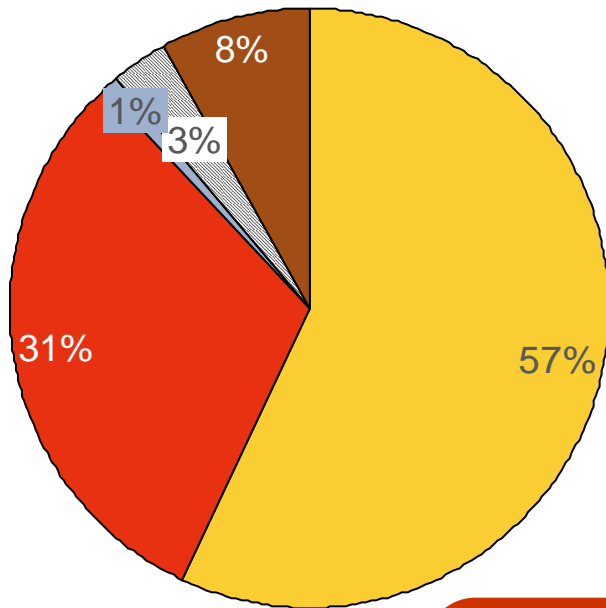
BOBST GROUP SA | LAUSANNE/MEX | AUGUST 20th, 2012 | SLIDE 2

Source: Pira Intl. – figures 2010

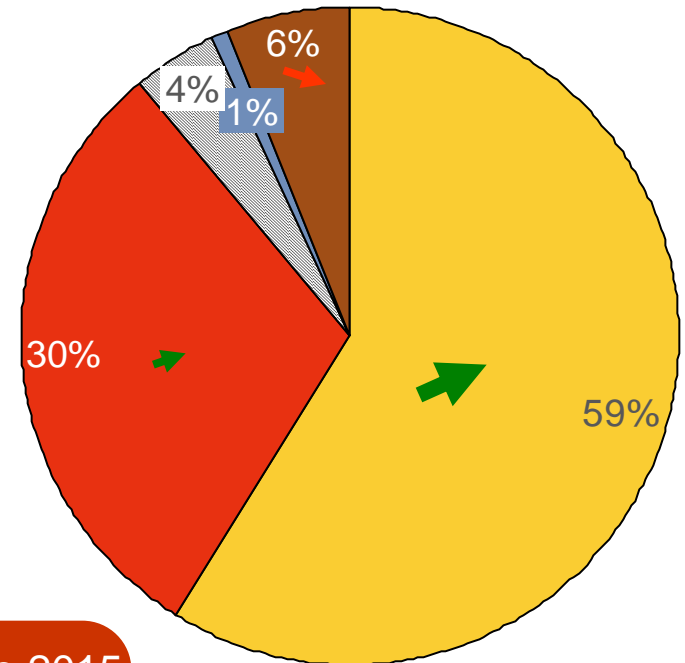
Industry Trends

PACKAGING USAGE BY PRINTING PROCESS

2010



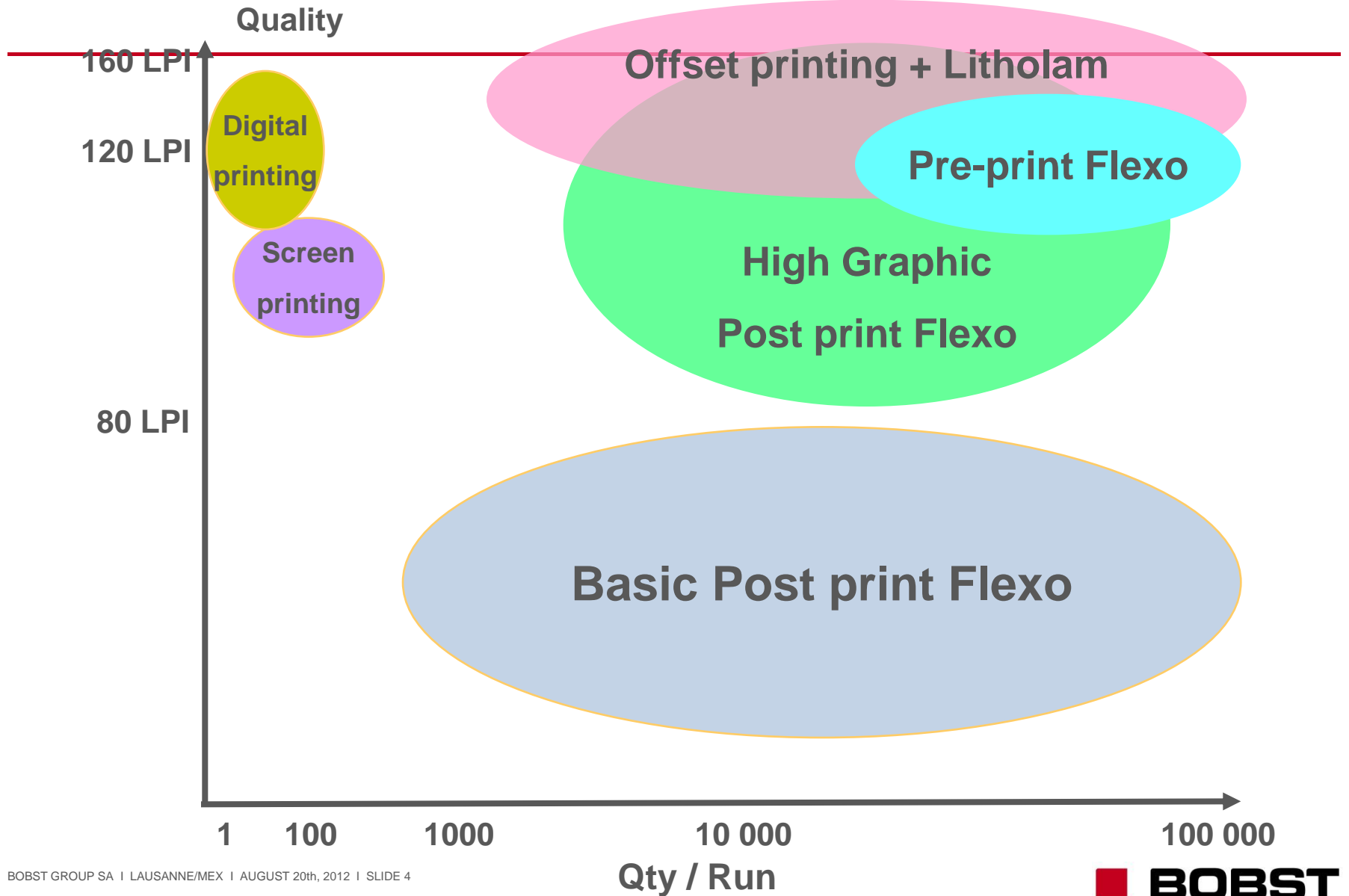
2015



Flexo
Litho
Digital
Unprinted
Gravure

Incremental volume from 2010 to 2015

| | | |
|-----------|-------|----------|
| Flexo | + 14 | Mio Tons |
| Litho | + 5 | Mio Tons |
| Digital | + 1.5 | Mio Tons |
| Unprinted | - 0.6 | Mio Tons |



What's next?



Efficiency

Common for machines today

Uptime goal of 97%

Same graphic capability whether DRO or FFG

- Non crush feeding

- In line Drying and UV

- Automatic anilox roll changes

- Full wrap mounting systems

Ability to

- run variable printing plate thickness

- skew printing plates

- lengthen and retard printing

- Eject nonconforming

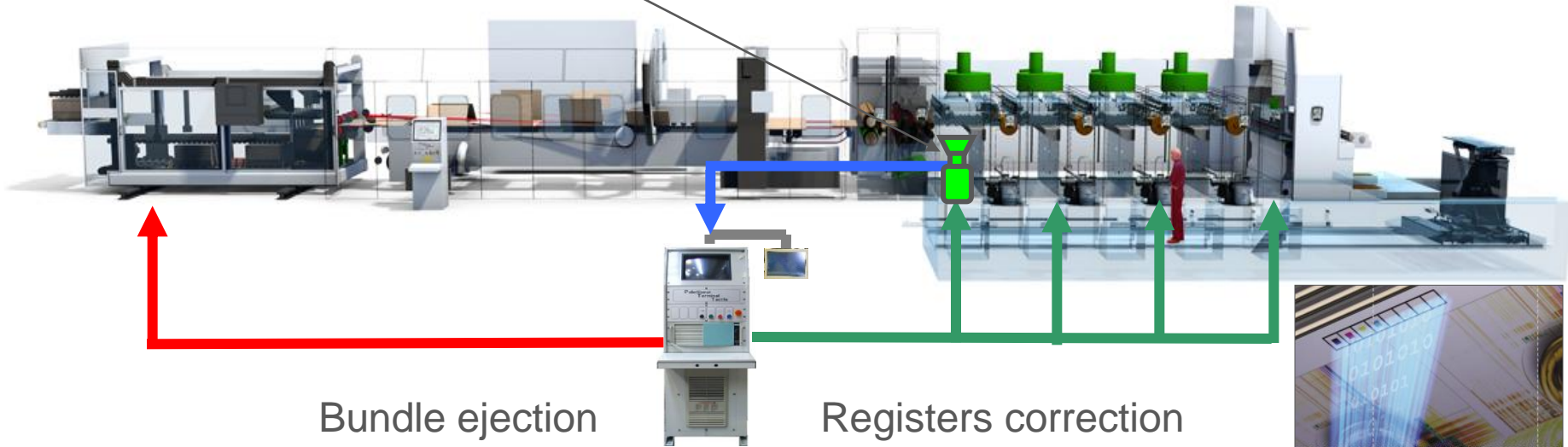
Register Controls

Quality Embedded

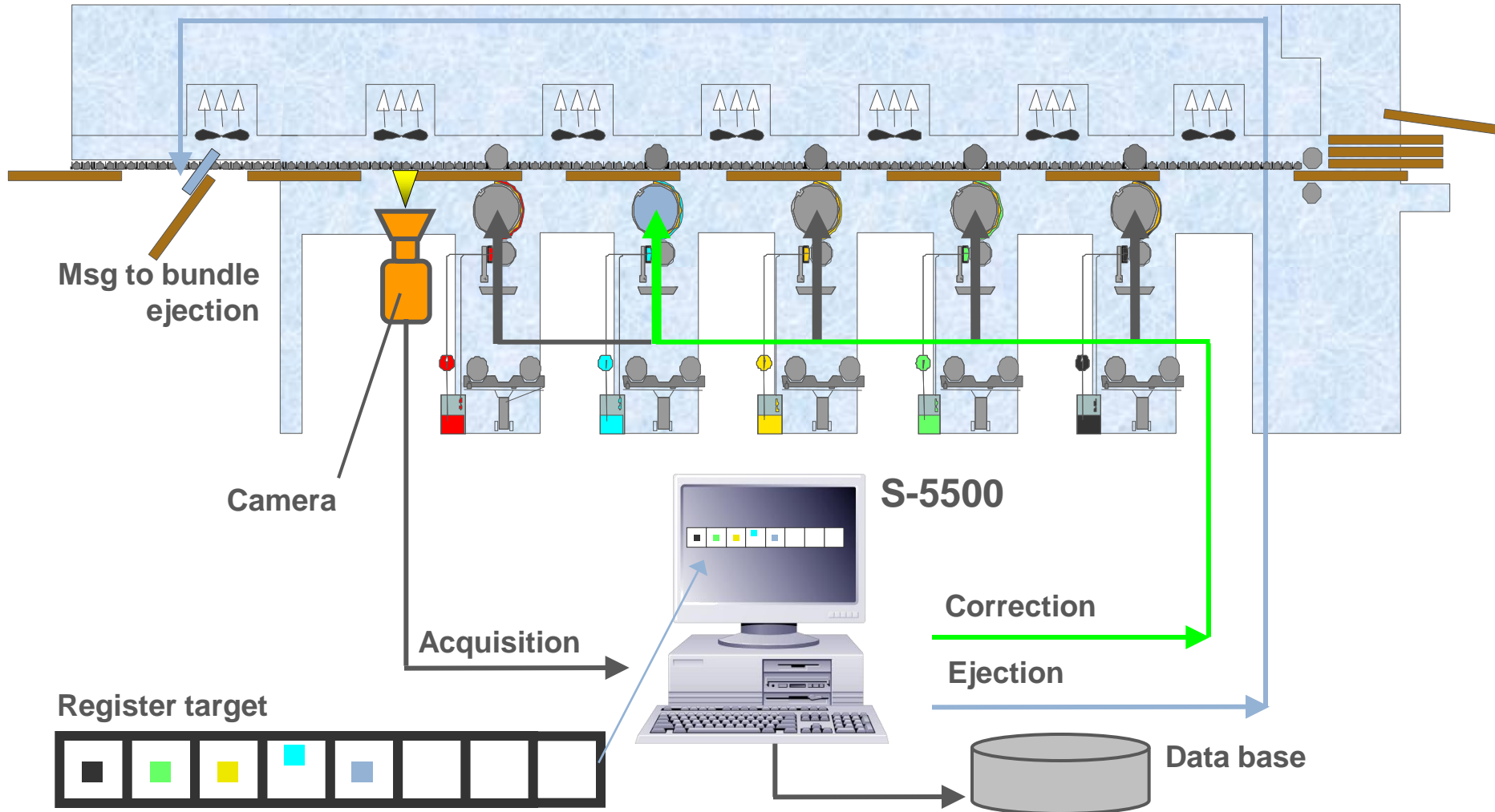
Printing Quality Control :

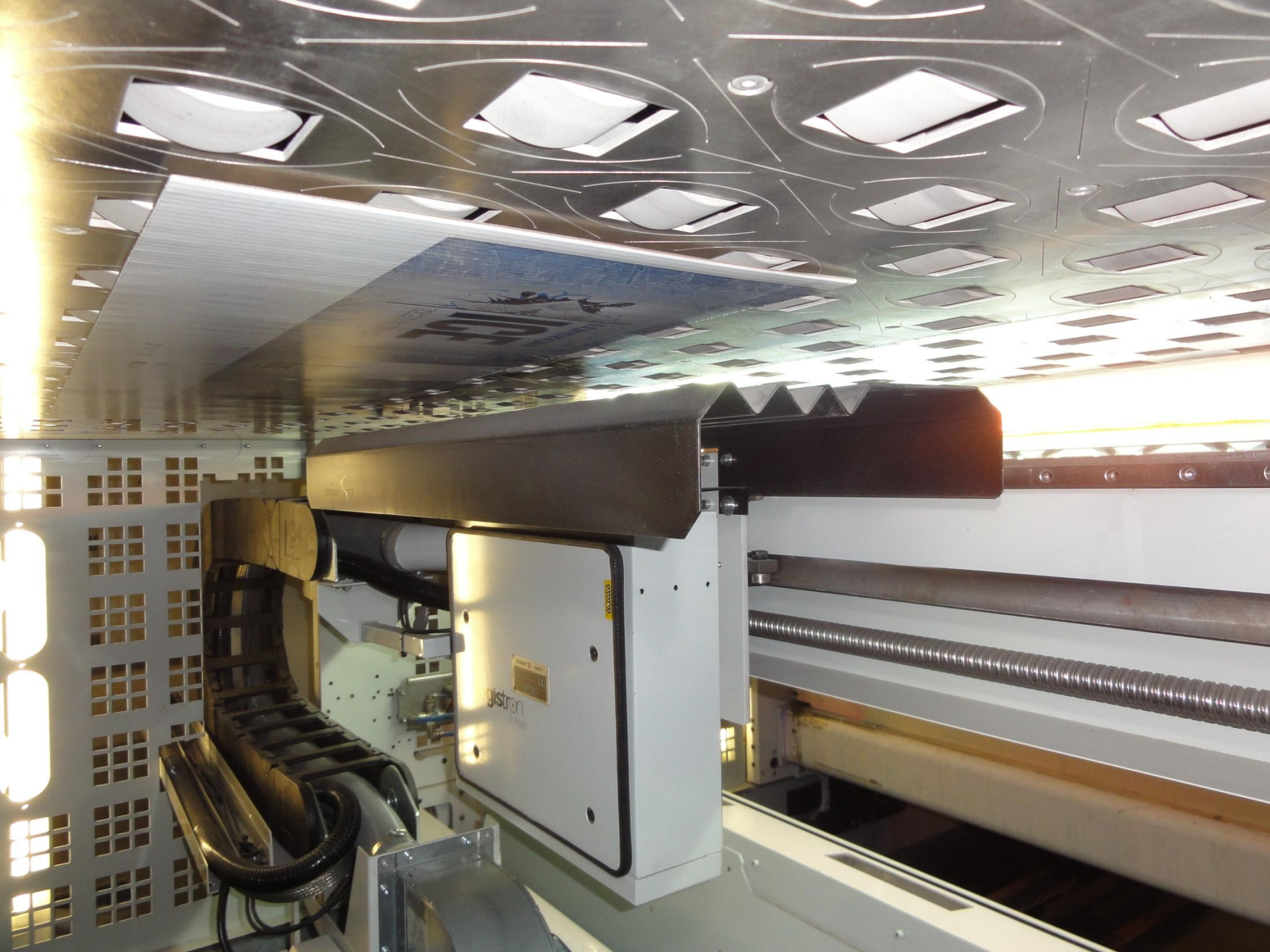
For precise registration

Registron S 5500



How register between colors works ?

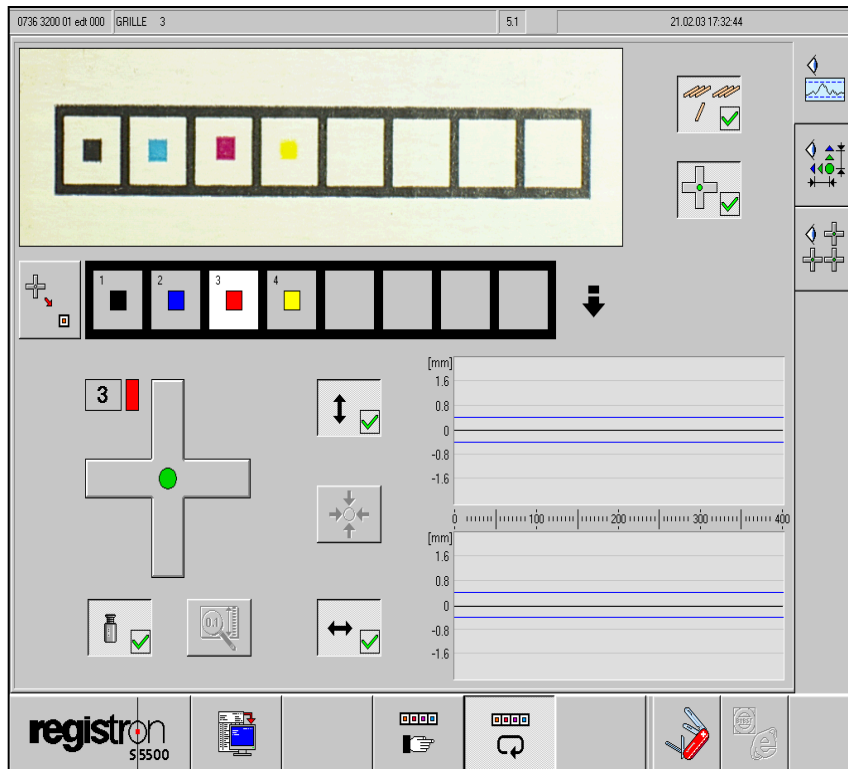




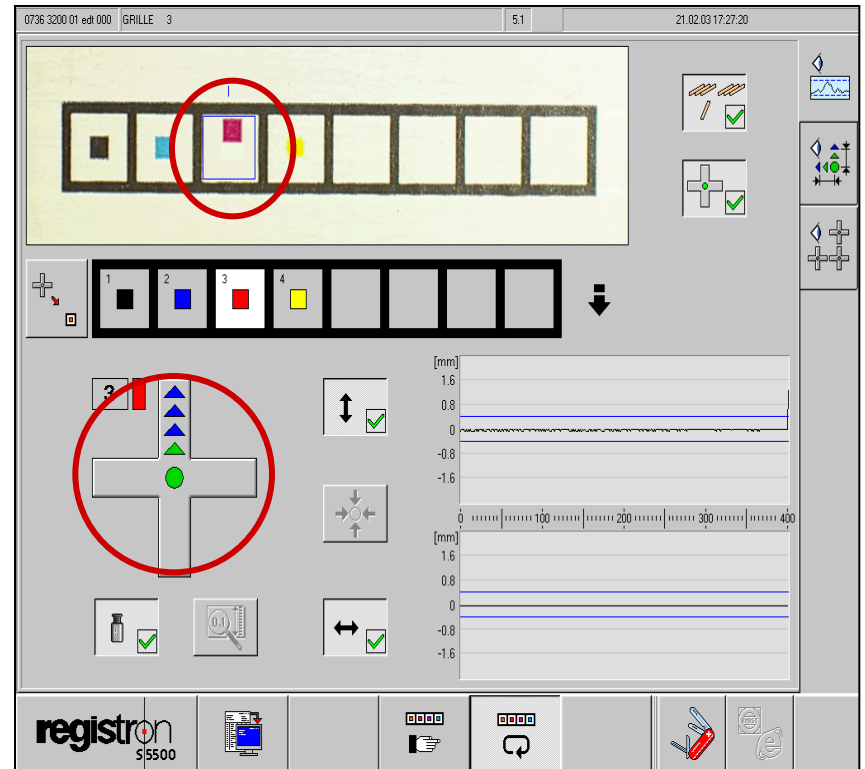
S-5500 interface

Easy correction through S-5500 interface

Screen during the production

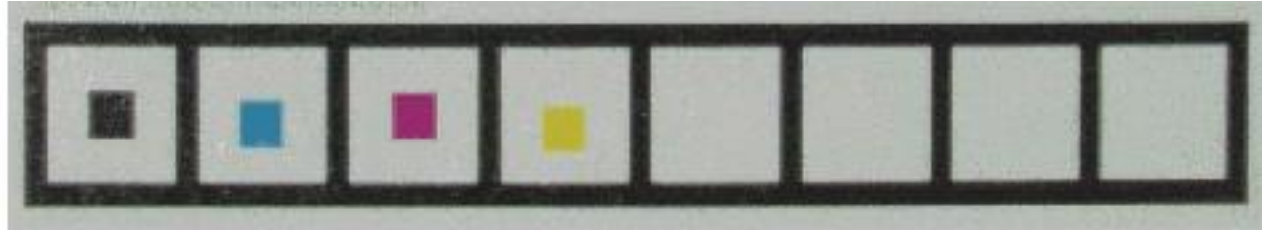


Screen with an error detected

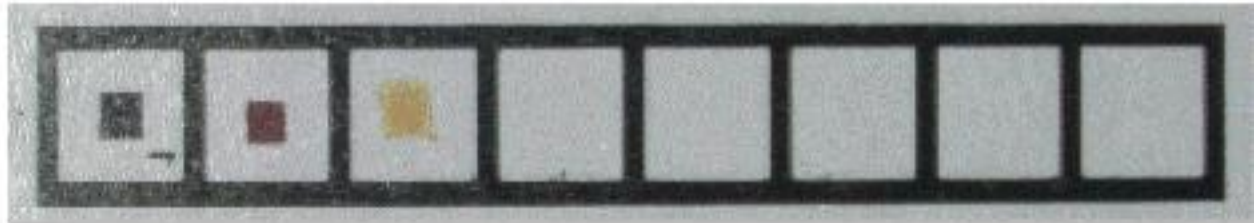


Process control and register target

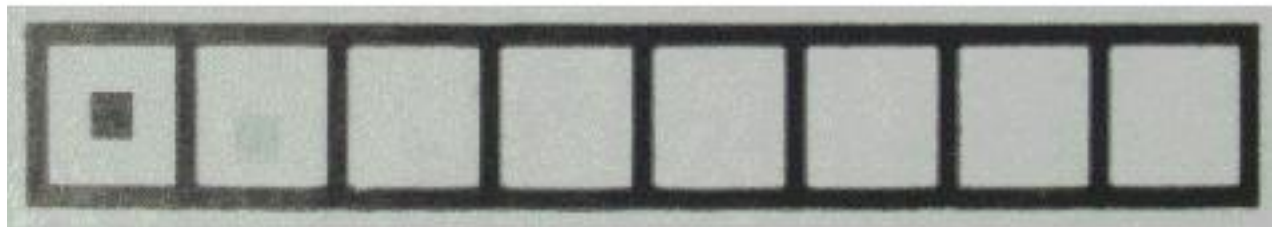
Acceptable



**Excessive pressure
for gold**



Loss of print



Data base

Automatic recording of
length and side register

- › Keep process in control
- › Know process capability
- › SPC Tool (Statistical Process Control) for ISO 9000



BOBST F&K 20SIX



smartGPS™: the smartest way of doing registration and impression related set-up

unique offline set-up technology >>

dramatic savings >>

- > considerably increases press uptime
requires no operator input – the set-up is fully automatic
- > perfectly consistent results irrespective of shift, time, ambient conditions etc.
- > works on any substrate incl. reflective materials
- > completely eliminates the danger of over-impression and subsequent danger of damage to plates
- > provides the correct impression setting independent of different drying characteristics
- > works independent of the ink or coating colour, i.e. also works with clear varnishes & lacquers
- > does not require target marks in the printed design saving ink and substrate through the entire run
- > also tracks anilox sleeves in the machine which reduces the chance of mix-ups

Unique offline set-up technology

- > all registration and impression related set-up shifted from press to mounting stage



Quality Controls

Toward Zero Default Packaging

Quality Embedded

Introducing the iQ300

Eliminate Costs associated with incoming inspection and customer claims

- › Define and guarantee 100% quality control on high-quality flexo post printing

Increase Productivity of your printing line

- › Fewer operator machine assists and sample inspections

Reduce Waste

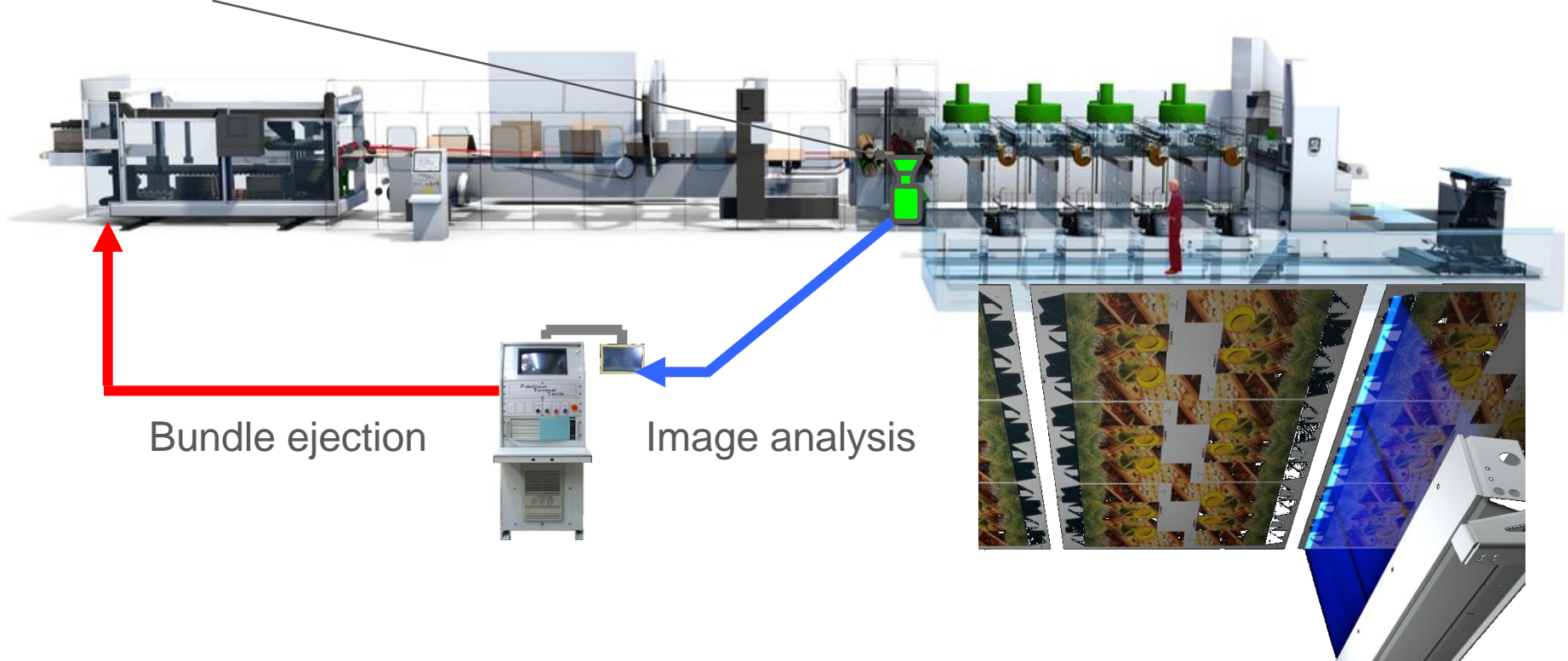
- › Prevent the proliferation of faults and process drift

Quality Embedded

Printing Quality Control :

For image consistency and specific features

iQ300



Quality Embedded

System composition iQ300

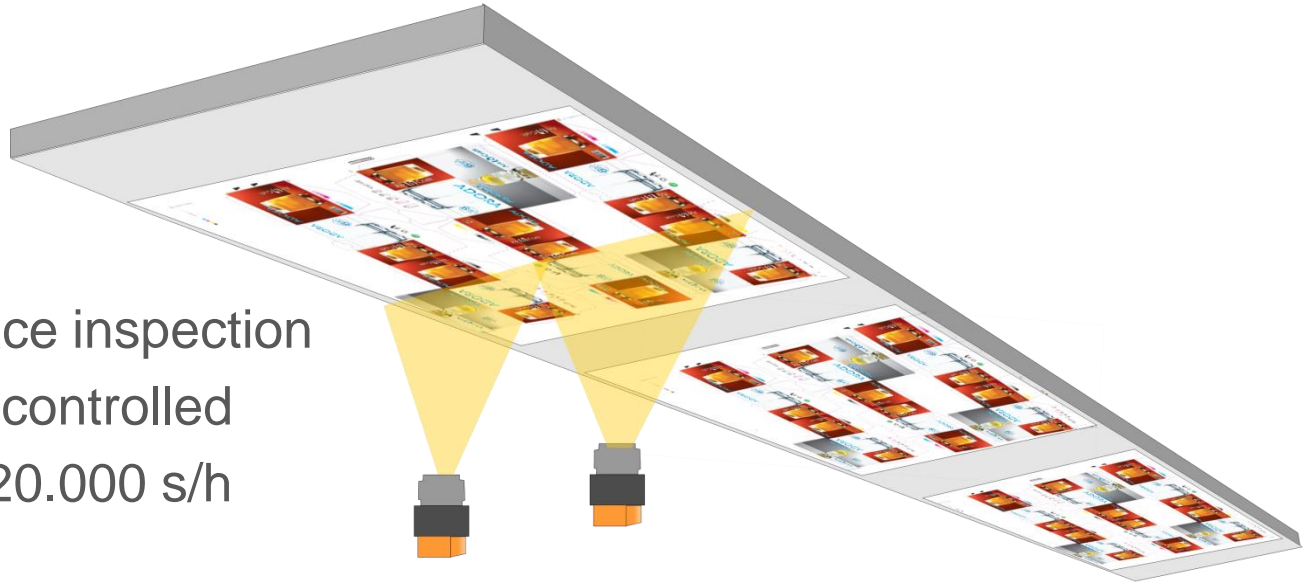




Quality Embedded

100% controlled output

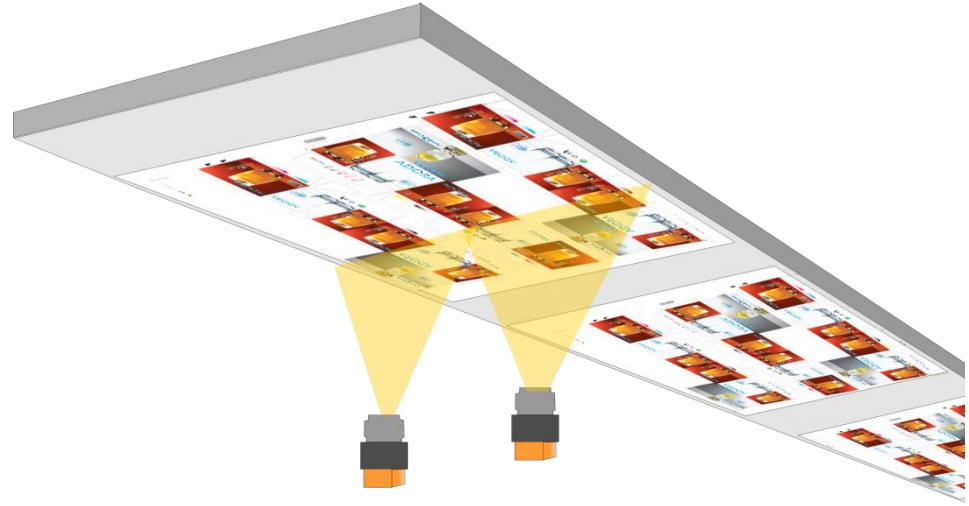
- 100% sheet surface inspection
- 100% sheets are controlled
- Top speed max. 20.000 s/h
- Bundle ejection



Quality Embedded

Features

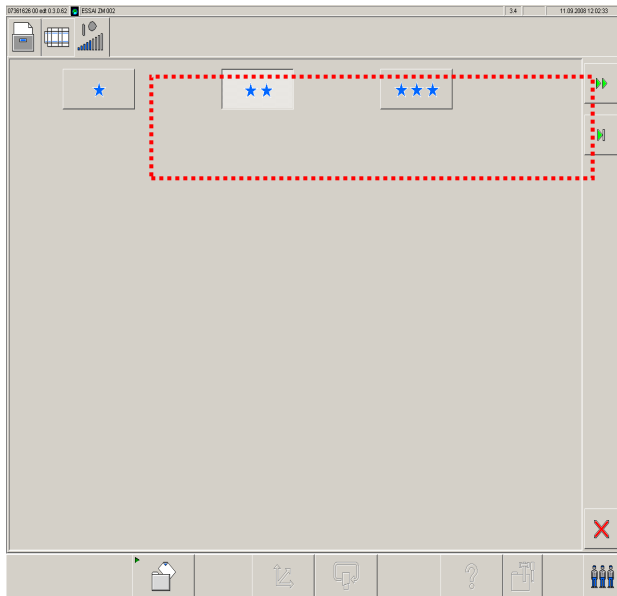
- Defect Memory
- Function density of defects
- Function defect repetition
(the defect is taken in consideration after an appearance)
- Warped board detection
- Wash-boarding detection
- Colour consistency with LAB/ delta E monitoring
- Tele maintenance Highway View (basic equipment)



Password Protected Programming Levels

OPERATOR

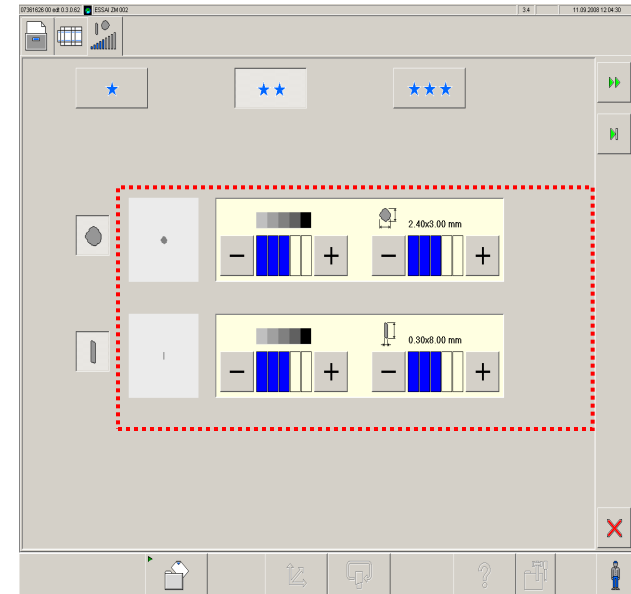
Select sensitivity level



SUPERVISOR

Define sensitivity levels and regions of interest according to:

- › Contrast, defect size and number of defects
- › “Ejection”, “Warning” and “Ignore”



What's Next?

What's next?

In the coming years
we will focus on:

- › **Digital Printing**

Contact us for more details!



Advantages are clear

- › Faster time to market
- › Reduced costs
- › Printing of variables data

THANK YOU FOR YOUR
CONTINUED SUPPORT!